

11

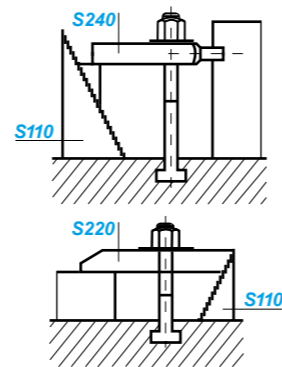
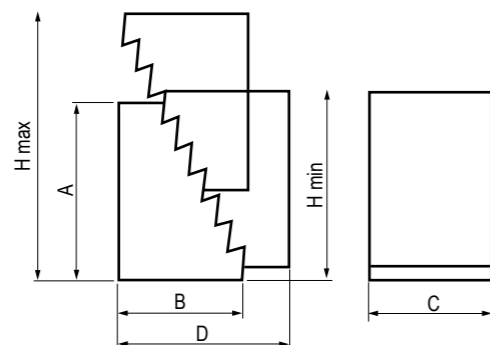
*To hold workpiece or fixtures  
perfectly clamp for cnc machining*

**Elementi modulari di staffaggio**  
*Modular clamping elements*

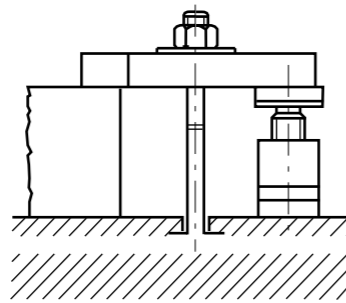
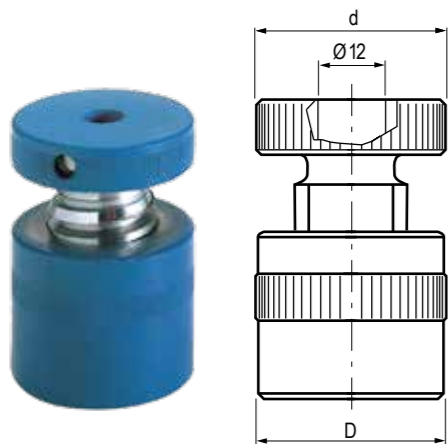


Dimensioni mm / Dimensions mm	B	C	D	H min	H max	gr	Cod.
<b>Art. S110</b>	31.5	22	30	38	31,5	90	S110.00001
	64.5	36.5	30	70	64,5	300	S110.00002
	128	68	30	132	128	1050	S.110.00003

 Appoggi dentati  
Toothed supports

 Altezza gradino: verticale = 4,65 mm / Orizzontale = 2,3 mm  
Height of tooth: vertical = 4,65 mm / horizontal = 2,3 mm


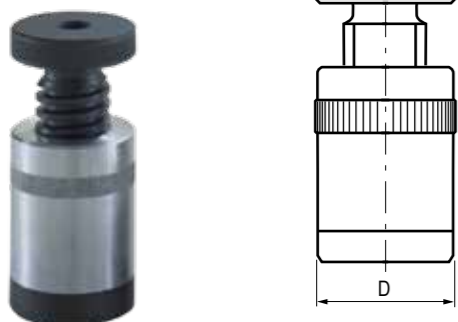
Art. S120	H min	H max	d	D	kN	gr	Passo	Cod.
	38	50	34	34	20	190	M30	S120.00050
	50	70	50	50	60	620	M30	S120.00070
	70	100	50	50	60	900	M30	S120.00100
	100	140	65	70	105	2600	Q 40 x 6	S120.00140
	140	210	70	80	180	4900	Q 40 x 6	S120.00210
	190	300	80	100	360	10500	Q 40 x 6	S120.00300

 Appoggi a vite  
Screw supports


Art. S121	h min	H max	d	D	kN	gr	Cod.
	42	52	50	50	30	370	S121.00050
	60	72	50	50	30	380	S121.00070
	70	100	50	50	30	600	S121.00100

 Appoggi a vite con base in alluminio  
Screw supports with aluminium base

Art. S122	h min	H max	d	D	kN	gr	Cod.
	57	64	50	50	30	380	S122.00050
	75	84	50	50	30	550	S122.00070
	85	112	50	50	30	710	S122.00100

 Appoggi a vite con base magnetica  
Screw supports with magnetic base

 Possibilità di posizionamento e registrazione sia in orizzontale che in verticale  
Possibilità di posizionamento e registrazione sia in orizzontale che in verticale

 Base-materiale Art. S121 e S122: lega in alluminio ERGAL (EN 7075 UNI 3735)  
Base-material Art. S121 and S122: ERGAL aluminium alloy (EN 7075 UNI 3735)

Dimensioni mm / Dimensions mm	D	h	per Articolo	gr	Cod.
<b>Art. S125</b>	35	25	S120.00050	25	S125.35025
	35	50	"	50	S125.35050
	35	75	"	75	S125.35075
	35	100	"	100	S125.35100
	50	50	S120.00070 / 100	50	S125.50050
	50	75	"	75	S125.50075
	50	100	"	100	S125.50100
	50	150	"	150	S125.50150
	70	50	S120.00140	50	S125.70050
	70	100	"	100	S125.70100
	70	150	"	150	S125.70150
	70	200	"	200	S125.70200

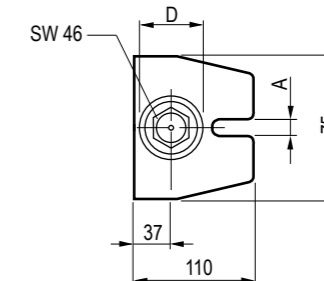
**Art. S125**

 Prolunghe per appoggi a vite  
Extension pieces for screw supports

 Utilizzato con l'Art. S120 permette di prolungare l'altezza dell'appoggio. Possono essere sovrapposte.  
Used with S120 give possibility to extend the length of the support. They should be placed one upon another

Art. S130	h min	H max	A	D	kN	gr	Cod.
	100	140	18	50	60	1800	S130.18140
	140	200	18	50	60	2300	S130.18200
	200	320	22	50	40	3600	S130.22320
	320	550	22	50	25	5500	S130.22550

**Art. S130**

 Appoggi a vite ATLAS  
Screw supports ATLAS type

 Filettatura trapezoidale passo 30 x 6. Con vite di fermo  
Trapezoidal thread 30 x 6. With stationary screw

Art. S131	h min	H max	A	D	kN	gr	Cod.
	200	300	26	70	80	9500	S131.00300
	280	460	26	70	60	11000	S131.00460
	430	750	26	70	50	13500	S131.00750
	710	1250	26	70	45	19000	S131.01250

**Art. S131**

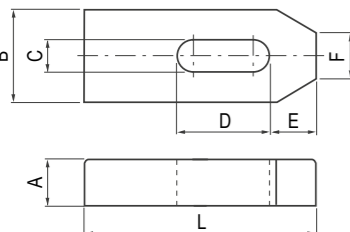
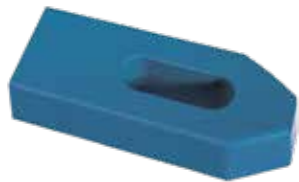
 Appoggi a vite tipo pesante  
Screw bearing type heavy

 Filettatura trapezoidale passo 40 x 6  
Trapezoidal thread 40 x 6

Dimensioni mm / Dimensions mm

**Art. S210**

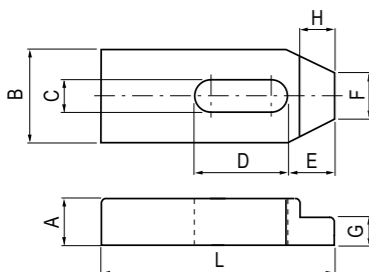
 Staffe semplici  
Standard clamps

**R. > 700 N / mm<sup>2</sup>**


A	B	C	D	E	F	G	H	L	gr	Cod.
10	20	7	20	10	8			50	6	S210.07050
12	25	9	22	13	10			60	8	S210.09060
15	30	11	30	15	12			80	10	S210.11080
20	40	14	40	21	14			100	12-14	S210.14100
20	40	14	50	21	14			125	12-14	S210.14125
20	40	14	65	21	14			160	12-14	S210.14160
25	50	18	45	26	18			125	16-18	S210.18125
25	50	18	65	26	18			160	16-18	S210.18160
25	50	18	80	26	18			200	16-18	S210.18200
30	60	22	60	30	22			160	20-22	S210.22160
30	60	22	80	30	22			200	20-22	S210.22200
30	70	26	80	35	26			200	24	S210.26200
30	70	26	105	35	26			250	24	S210.26250
40	80	34	100	45	34			250	27-30	S210.34250
40	80	34	130	45	34			315	27-30	S210.34315

**Art. S211**

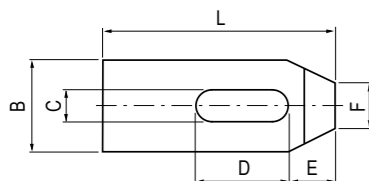
 Staffe semplici ridotte  
Shaped standard clamps

**R. > 700 N / mm<sup>2</sup>**


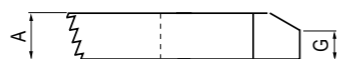
A	B	C	D	E	F	G	H	L	gr	Cod.
10	20	7	20	10	8	6	7	50	6	S211.07050
12	25	9	22	13	10	7	10	60	8	S211.09060
15	30	11	30	15	12	9	9	80	10	S211.11080
20	40	14	40	21	14	12	12	100	12-14	S211.14100
20	40	14	50	21	14	12	12	125	12-14	S211.14125
20	40	14	65	26	14	12	12	160	12-14	S211.14160
25	50	18	45	26	18	15	15	125	16-18	S211.18125
25	50	18	65	26	18	15	15	160	16-18	S211.18160
25	50	18	80	26	18	15	15	200	16-18	S211.18200
30	60	22	60	30	22	20	20	160	20-22	S211.22160
30	60	22	80	30	22	20	20	200	20-22	S211.22200
30	70	26	80	35	26	20	25	200	24	S211.26200
30	70	26	105	35	26	20	25	250	24	S211.26250
40	80	34	100	45	34	25	25	250	27-30	S211.34250
40	80	34	130	45	34	25	25	315	27-30	S211.34315

**Art. S220**

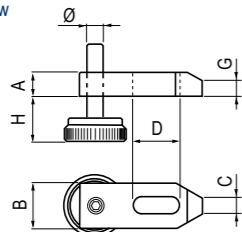
 Staffe dentate  
Toothed clamps

**R. > 700 N / mm<sup>2</sup>**


A	B	C	D	E	F	G	H	L	gr	Cod.
10	20	7	20	10	8	6		50	6	S220.07050
12	25	9	22	13	10	8		60	8	S220.09060
15	30	11	30	15	12	10		80	10	S220.11080
20	40	14	40	21	14	12		100	12-14	S220.14100
25	50	18	45	26	18	15		125	16-18	S220.18125
30	60	22	60	30	22	18		160	20-22	S220.22160
30	70	26	80	35	26	18		200	24	S220.26200


**Art. S230**

 Staffe regolabili con vite a passo fine  
Adjustable clamps with fine pitch screw

**R. > 700 N / mm<sup>2</sup>**


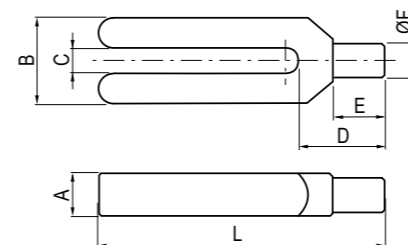
A	B	C	D	G	H	L	Ø	gr	Cod.
15	30	11	30	10	8-28	80	M10	10	S.230.11080
20	40	14	40	12	10-32	100	M12	12-14	S.230.14100
25	50	18	45	15	13-40	125	M16	16-18	S.230.18125
30	60	22	60	18	18-60	160	M20	20-22	S.230.22160

Viti ricambio / Spare screws		A	B	H	L	gr	Cod.
Art. S231		40	M10	8	60	130	S231.00010
		45	M12	8	60	210	S231.00012
		45	M16	8	70	245	S231.00016
		45	M20	8	80	300	S231.00020

Dimensioni mm / Dimensions mm

**Art. S240**

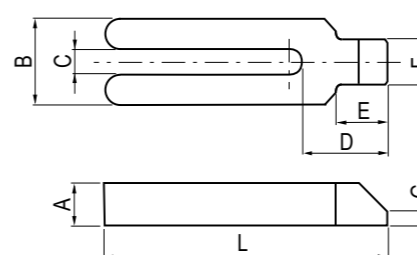
 Staffe a forcella con gambo cilindrico  
Forked clamps with cylindrical shank

**R. > 600 N / mm<sup>2</sup>**


A	B	C	D	E	F	G	H	L	gr	Cod.
15	30	9	30	18	12			100	8	S240.09100
20	30	11	36	24	16			125	10	S240.11125
25	40	14	45	30	20			160	12-14	S240.14160
25	40	14	45	30	20			200	12-14	S240.14200
30	50	18	55	36	24			200	16-18	S240.18200
30	50	18	55	36	24			250	16-18	S240.18250
40	60	22	65	45	30			250	20-22	S240.22250
40	60	22	65	45	30			315	20-22	S240.22315
40	70	26	80	56	38			250	24	S240.26250
40	70	26	80	56	38			315	24	S240.26315
50	80	34	85	56	45			315	27-30	S240.34315
50	80	34	85	56	45			400	27-30	S240.34400

**Art. S250**

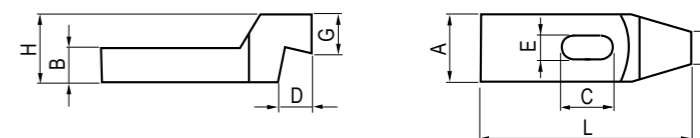
 Staffe a forcella con nasello  
Forked clamps with nib

**R. > 600 N / mm<sup>2</sup>**


A	B	C	D	E	F	G	H	L	gr	Cod.
15	30	9	30	18	16	5		100	8	S250.09100
20	30	11	36	24	20	6		125	10	S250.11125
25	40	14	45	30	25	7		160	12-14	S250.14160
25	40	14	45	30	25	7		200	12-14	S250.14200
30	50	18	55	36	28	8		200	16-18	S250.18200
30	50	18	55	36	28	8		250	16-18	S250.18250
40	60	22	65	45	35	10		250	20-22	S250.22250
40	60	22	65	45	35	10		315	20-22	S250.22315
40	70	26	80	56	43	10		250	24	S250.26250
40	70	26	80	56	43	10		315	24	S250.26315
50	80	34	85	56	50	12		315	27-30	S250.34315
50	80	34	85	56	50	12		400	27-30	S250.34400

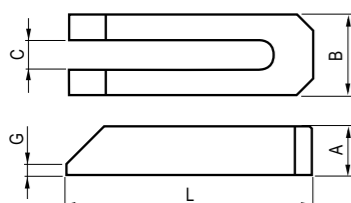
**Art. S260**

 Staffe a gomito  
Cranked clamps

**R. > 700 N / mm<sup>2</sup>**

 Il pregio dell'articolo sta nell'essere prodotto tramite la fresatura di un blocco d'acciaio (non è quindi piegato)  
This article is produced milling a steel block (it is not produced by bending)

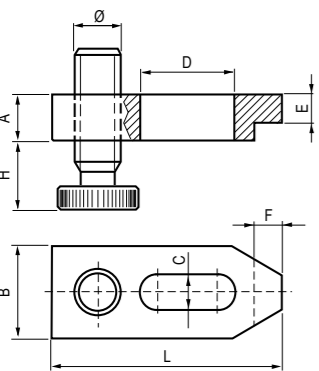
A	B	C	D	E	F	G	H	L	gr	Cod.
40	20	30	20	14	20	23	40	125	12-14	S260.14125
50	25	40	25	18	25	28	50	160	16-18	S260.18160
50	25	60	25	18	25	28	50	200	16-18	S260.18200
60	30	40	30	22	30	35	60	160	20-22	S260.22160
60	30	60	30	22	30	35	60	200	20-22	S260.22200
70	35	50	35	26	35	38	70	200	24	S260.26200
70	35	75	35	26	35	38	70	250	24	S260.26250

Dimensioni mm / Dimensions mm	A	B	C	G	L		gr	Cod.
<b>Art. S270</b> Staffe a forcella con smusso Forked clamps with bevel <i>R. &gt; 600 N / mm<sup>2</sup></i>	12	20	7	3	60	6	70	S270.07060
	15	25	9	4	80	8	150	S270.09080
	20	30	11	5	100	10	270	S270.11100
	25	40	14	6	125	12-14	590	S270.14125
	25	40	14	6	160	12-14	760	S270.14160
	25	40	14	6	200	12-14	970	S270.14200
	30	50	18	8	160	16-18	1160	S270.18160
	30	50	18	8	200	16-18	1400	S270.18200
	40	50	18	10	250	16-18	2330	S270.18250
	40	50	22	10	200	20-22	1700	S270.22200
	40	60	22	10	250	20-22	2880	S270.22250
	40	60	22	10	315	20-22	2530	S270.22315
	40	70	26	10	200	24	2680	S270.26200
	40	70	26	10	250	24	3370	S270.26250
	40	70	26	10	315	24	4220	S270.26315
	50	80	34	12	250	27-30	4480	S270.34250
	50	80	34	12	315	27-30	5600	S270.34315
	50	80	34	12	400	27-30	7150	S270.34400
	60	100	40	12	400	36	11700	S270.40400
	60	100	40	12	600	36	17300	S270.40600

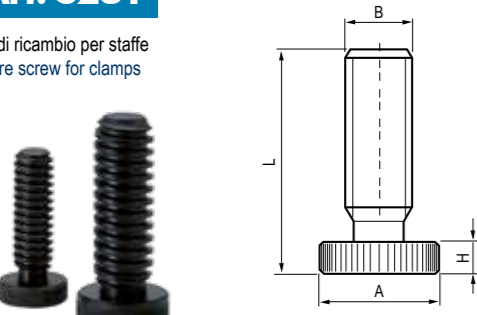


Il pregio dell'articolo sta nell'essere prodotto tramite la fresatura di un blocco d'acciaio (non è quindi piegato)  
This article is produced milling a steel block (it is not produced by bending)

Dimensioni mm / Dimensions mm	A	B	C	D	E	F	H	L	Ø		gr	Cod.
<b>Art. S280</b> Staffe regolabili con vite a passo quadro Adjustable clamps with square thread screw <i>R. &gt; 700 N / mm<sup>2</sup></i>	20	40	15	40	12	12	15-50	100	20x4	12-14	620	S280.14100
	20	40	15	45	12	12	15-50	125	20x4	12-14	770	S280.14125
	20	40	15	60	12	12	15-50	160	20x4	12-14	950	S280.14160
	25	50	19	45	15	15	15-70	125	20x4	16-18	1090	S280.18125
	25	50	19	60	15	15	15-70	160	30x6	16-18	1640	S280.18160
	25	50	19	80	15	15	15-70	200	30x6	16-18	1970	S280.18200
	30	60	23	60	15	20	15-70	160	30x6	20-22	2120	S280.22160
	30	60	23	80	15	20	15-70	200	30x6	20-22	2570	S280.22200
	40	70	27	80	25	23	15-70	200	30x6	24	3700	S280.26200
	40	70	27	100	25	23	15-70	250	30x6	24	4620	S280.26250
	40	70	27	100	25	23	15-70	300	30x6	24	5740	S280.26300

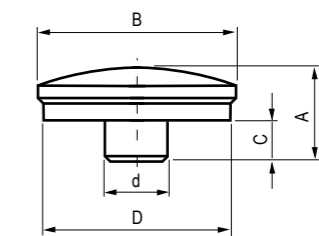


Dimensioni mm / Dimensions mm	A	B	H	L	gr	Cod.
<b>Art. S281</b> Viti di ricambio per staffe Spare screw for clamps	10	20 x 4	70	35	190	S281.20004
	15	30 x 6	100	45	540	S281.30006
	15	30 x 6	125	70	1050	S281.30006.A



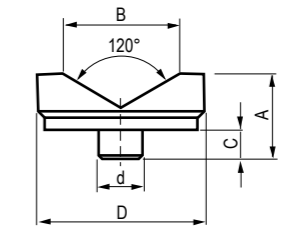
Filetto TPN passo quadro.  
Materiale: 35SMnPb 10 UNI 4838. Classe 8.8  
TPN thread square pitch.  
Material: SMnPb 10 UNI 4838. Class 8.8

Dimensioni mm / Dimensions mm	A	B	C	D	d	gr	Cod.
<b>Art. S151</b> Puntali bombati Convex caps	18	37	8	35	12	70	S151.00035



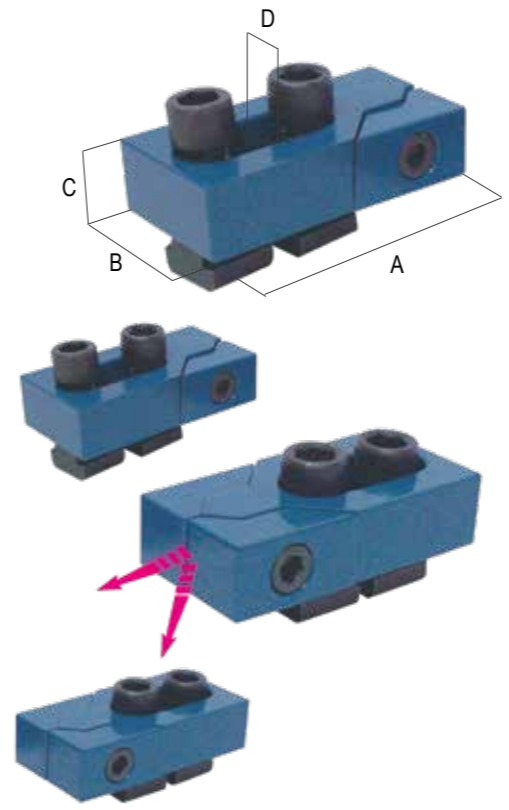
Utilizzati su Art. S120, S121, S122, S130, S131  
Used on Art. S120, S121, S122, S130, S131

Dimensioni mm / Dimensions mm	A	B	C	D	d	gr	Cod.
<b>Art. S152</b> Puntali prismatici "V" groove caps	23	32	8	45	12	145	S152.00045
	38	56	8	65	12	580	S152.00065



Utilizzati su Art. S120, S121, S122, S130, S131  
Used on Art. S120, S121, S122, S130, S131

Dimensioni mm / Dimensions mm	A	B	C	D		kN F1	kN F2	gr	Cod.
<b>Art. ML10</b> Morsetti laterali Side buckles	80	40	20	11,7	12	16	0,6	1040	ML10.00012
	80	40	20	13,7	14	22	0,9	1070	ML10.00014
	100	50	25	15,7	16	32	1,2	2040	ML10.00016
	100	50	25	17,7	18	36	1,4	2080	ML10.00018
	100	50	25	19,7	20	36	1,4	2290	ML10.00020
	140	78	30	21,7	22	36	1,4	5530	ML10.00022
	140	78	30	23,7	24	36	1,4	5800	ML10.00024
	140	78	30	27,7	28	40	1,6	6200	ML10.00028
	140	78	30	29,7	30	40	1,6	6800	ML10.00030



Costruzione a cuneo che permette il bloccaggio contemporaneo del pezzo in senso verticale e orizzontale  
Forniti in coppia  
Wedge type construction which enable to simultaneously clamp vertically and horizontally. Supplied in pairs

## STAFFAGGI ASSORTITI ASSORTED CLAMPING TOOLS

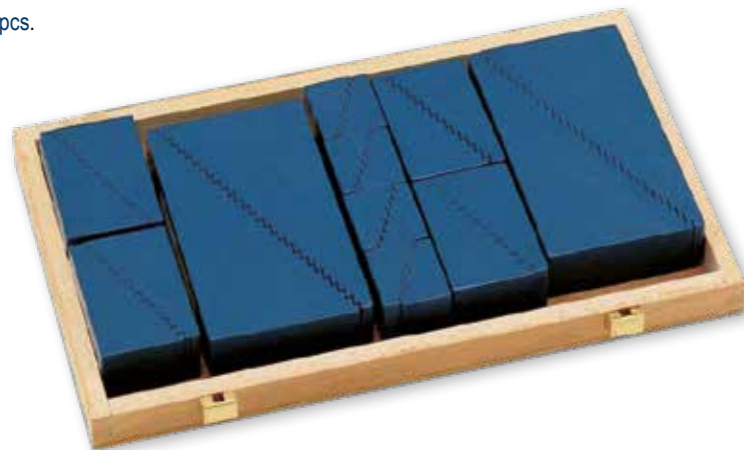
### Art. S410

Kit 46 pezzi / pcs.



### Art. S440

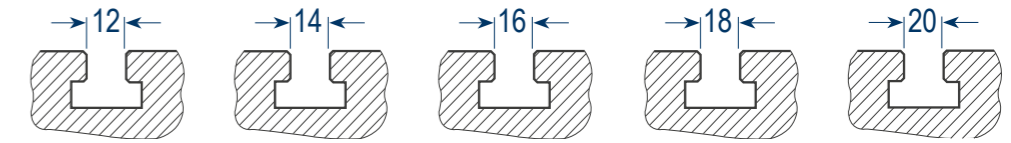
Kit 20 pezzi / pcs.



## APPOGGI DENTATI MULTIPLE STEP SUPPORT

### Art. S410

Kit 46 pezzi / pcs.



Descrizione contenuto Contents description	Cod. S410.00012	Cod. S410.00014	Cod. S410.00016	Cod. S410.00018	Cod. S410.00020
Appoggi dentati / Toothed support	n. 2 S110.00001	n. 2 S110.00001	n. 2 S110.00001	n. 2 S110.00001	n. 2 S110.00001
Appoggi dentati / Toothed support	n. 4 S110.00002	n. 4 S110.00002	n. 4 S110.00002	n. 4 S110.00002	n. 4 S110.00002
Appoggi dentati / Toothed support	n. 2 S110.00003	n. 2 S110.00003	n. 2 S110.00003	n. 2 S110.00003	n. 2 S110.00003
Staffe semplici / Flat clamps	n. 4 S210.14100	n. 4 S210.14125	n. 4 S210.14100	n. 4 S210.18125	n. 4 S210.22200
Staffe dentate / Toothed clamps	n. 4 S220.14100	n. 4 S220.14100	n. 4 S220.18125	n. 4 S220.18125	n. 4 S220.22160
Viti testa martello / T-slot bolts	n. 2 S310.12080	n. 2 S310.14100	n. 4 S310.16100	n. 4 S310.18150	n. 4 S310.20150
Viti testa martello / T-slot bolts	n. 4 S310.12125	n. 4 S310.14150	n. 2 S310.16150	n. 2 S310.18200	n. 2 S310.20200
Prigionieri completi / Studs	n. 2 S320.10080	n. 2 S320.12080	n. 2 S320.14100	n. 2 S320.16125	n. 2 S320.18125
Prigionieri completi / Studs	n. 2 S320.10100	n. 2 S320.12160	n. 2 S320.14160	n. 2 S320.16160	n. 2 S320.18160
Dadi prolung. / Extensions nuts	n. 4 S350.10030	n. 4 S350.12036	n. 4 S350.14042	n. 4 S350.16048	n. 4 S350.18054
Dadi altri / Turned toll nuts	n. 6 S340.12018	n. 6 S340.14021	n. 6 S340.16024	n. 6 S340.18027	n. 6 S340.20030
Tasselli per cave / T-slot nuts	n. 4 S360.10012	n. 4 S360.12014	n. 4 S360.14016	n. 4 S360.16018	n. 4 S360.18020
Rondelle / Washers	n. 6 S370.00012	n. 6 S370.00014	n. 6 S370.00016	n. 6 S370.00018	n. 6 S370.00020
Peso kg / Weight kg	10,5	12	17	18	27
Dimensioni cm / Dimensions cm	37 x 32		47 x 33		50 x 41
Cassetta in legno vuota Wooden box	Cod. S410.BOX01		Cod. S410.BOX02		Cod. S410.BOX03

### Art. S440

Kit 20 pezzi / pcs.

Descrizione contenuto  
Contents description



S110.00001	8 pezzi / pcs
S110.00002	8 pezzi / pcs
S110.00003	4 pezzi / pcs
Peso kg / Weight kg	8,5
Dimensioni cm / Dimensions cm	30,5 x 17

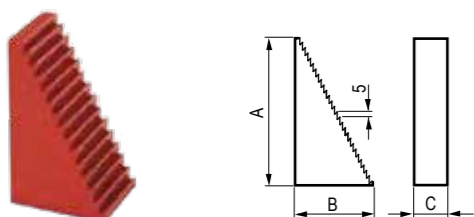
Cod. S440.00001

**ELEMENTI MODULARI DI STAFFAGGIO** Materiale: Alluminio

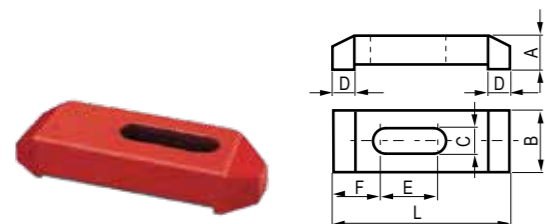
**MODULAR CLAMPING TOOLS** Material: Aluminum

**STAFFAGGI ASSORTITI IN ALLUMINIO - ALUMINIUM ASSORTED CLAMPING TOOLS**

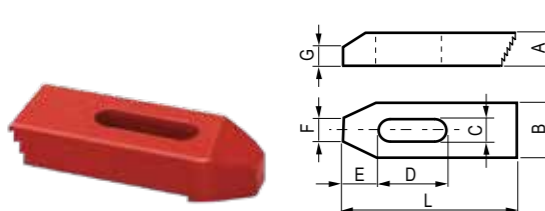
Dimensioni mm / Dimensions mm	A	B	C	D	E	F	G	L	gr	Cod.
<b>Art. S115</b> Appoggi dentati / Toothed supports	34	28	25						35	S115.00001
	66	38	25						100	S115.00002
	128	70	25						280	S115.00003



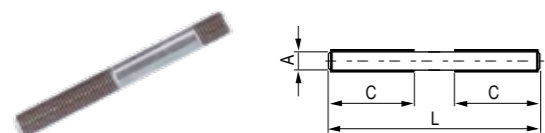
Dimensioni mm / Dimensions mm	A	B	C	D	E	F	G	L	gr	Cod.
<b>Art. S215</b> Staffe doppie / Double clamps	15	25	9	11	28	20		65	40	S215.00065
	20	25	9	14	40	20		100	85	S215.00100
	20	30	9	18	65	24		150	150	S215.00150



Dimensioni mm / Dimensions mm	A	B	C	D	E	F	G	L	gr	Cod.
<b>Art. S225</b> Staffe dentate / Toothed clamps	13	25	9	25	16	10	11	65	43	S225.00065
	17	25	9	46	20	11	11	100	92	S225.00100
	17	30	9	82	23	12	12	150	162	S225.00150



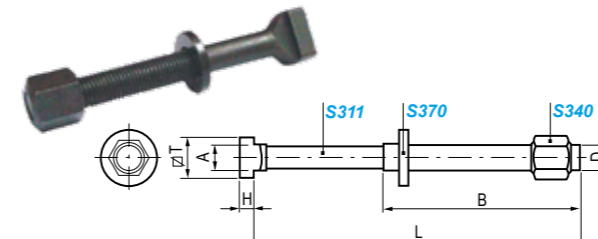
Dimensioni mm / Dimensions mm	A	B	C	D	E	F	G	L	gr	Cod.
<b>Art. S325</b> Prigionieri singoli in acciaio zincati Single studs in zinked steel	M8		40					100	31	S325.08100
	M8		40					125	39	S325.08125
	M8		40					150	47	S325.08150
	M8		40					175	54	S325.08175
	M8		40					200	62	S325.08200



**BULLONERIA VARIA** Materiale: UNI 42CrMo4 a norma ASTM A193-B7 Classe 10.9

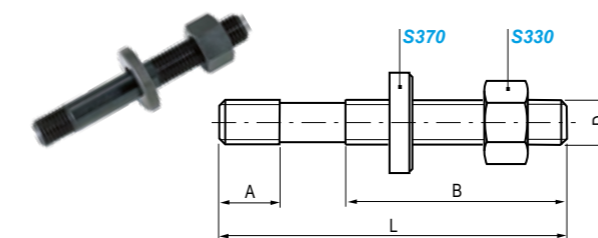
**NUTS AND BOLTS** Material: UNI 42CrMe4 according to standard ASTM A193 B7 Class 10.9

Dimensioni mm / Dimensions mm	A	B	D	H	L	T	gr	Cod.
<b>Art. S310</b> Vite testa martello completa di dado S340 e rondella S370 Hammerheads bolts complete with nut S340 and washer S370	11,7	55	M12	7	80	18	125	S310.12080
	11,7	75	M12	7	125	18	150	S310.12125
	13,7	65	M14	8	100	22	215	S310.14100
	13,7	100	M14	8	150	22	270	S310.14150
	15,7	63	M16	9	100	25	270	S310.16100
	15,7	100	M16	9	150	25	345	S310.16150
	17,7	100	M18	10	150	28	450	S310.18150
	17,7	125	M18	10	200	28	530	S310.18200
	19,7	100	M20	12	150	32	600	S310.20150
	19,7	125	M20	12	200	32	700	S310.20200



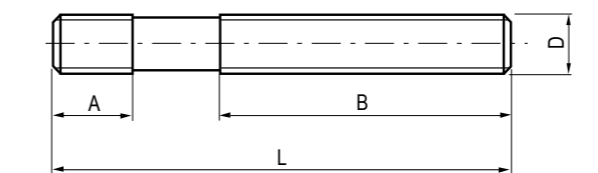
Filetto ottenuto per rollatura / Rolled thread

<b>Art. S320</b> Prigionieri completi di dado S330 e rondella S370 Studs complete with short nut S330 and washer S370	13	50	M10		80		65	S320.10080
	13	75	M10		100		75	S320.10100
	15	50	M12		80		95	S320.12080
	15	100	M12		160		155	S320.12160
	17	63	M14		100		160	S320.14100
	17	100	M14		160		215	S320.14160
	19	75	M16		125		235	S320.16125
	19	100	M16		160		295	S320.16160
	23	75	M18		125		300	S320.18125
	23	100	M18		160		355	S320.18160



Filetto ottenuto per rollatura / Rolled thread

<b>Art. S321</b> Prigionieri singoli Single studs	14	25	M10		60		30	S321.10060
	14	30	M10		80		40	S321.10080
	14	35	M10		100		50	S321.10100
	14	40	M10		120		65	S321.10120
	14	50	M10		160		80	S321.10160
	14	60	M10		200		100	S321.10200
	15	32	M12		60		45	S321.12060
	15	50	M12		80		55	S321.12080
	15	63	M12		100		70	S321.12100
	15	75	M12		125		90	S321.12125
	15	100	M12		160		115	S321.12160
	15	125	M12		200		140	S321.12200
	19	35	M16		65		85	S321.16065
	19	50	M16		80		105	S321.16080
	19	75	M16		125		160	S321.16125
	19	100	M16		160		220	S321.16160
	19	125	M16		200		280	S321.16200
	19	160	M16		250		325	S321.16250



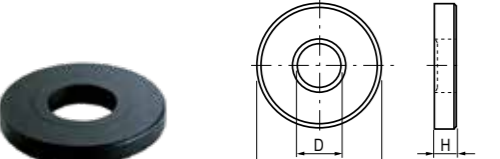
Filetto ottenuto per rollatura / Rolled thread

! Si eseguono su richiesta misure non a catalogo / Other sizes can be supplied on request

**BULLONERIA VARIA** Material: UNI 42CrMo4 according a norma ASTM A193-B7 Classe 10.9

**NUTS AND BOLTS** Material: UNI 42CrMo4 according to standard ASTM A193-B7 Class 10.9

**DADI e RONDELLE - NUTS and WASHERS**

Dimensioni mm / Dimensions mm	A	B	C	D	E	H	M	S	T	gr	Cod.
<b>Art. S340</b> Dadi alti torniti - Turned tall nuts 					21,5	18	M12	19		28	S340.12018
					25	21	M14	22		45	S340.14021
					27,5	24	M16	24		58	S340.16024
					31	27	M18	27		83	S340.18027
					34,6	30	M20	30		110	S340.20030
<b>Art. S350</b> Ex. Art. S360 Dadi prolungamento - Extension nuts 					19,6	30	M10	17		42	S350.10030
					21,5	36	M12	19		64	S350.12036
					25	42	M14	22		95	S350.14042
					27,5	48	M16	24		120	S350.16048
					31	54	M18	27		170	S350.18054
<b>Art. 287</b> Dadi per cave a "T" - Nuts for "T" slots 	18	14	7	11,7			M10			12	2.28.72000 / 12
	22	16	8	13,7			M12			22	2.28.72000 / 19
	25	18	9	15,7			M14			37	2.28.740000 / 27
	28	20	10	17,7			M16			59	2.28.740000 / 32
	32	24	12	19,7			M18			82	2.28.760000 / 39
<b>Art. S370</b> Rondelle normali tornite - Flat washer 				10,5	22	4				9	S370.00010
				13	28	5				20	S370.00012
				15	35	6				35	S370.00014
				17	35	6				35	S370.00016
				19	40	6				45	S370.00018
<b>Art. S380</b> Rondelle alte tornite - Thick washer 				10,5	35	8				55	S380.00010
				13	40	8				70	S380.00012
				15	40	10				85	S380.00014
				17	45	10				105	S380.00016
				19	45	10				100	S380.00018

**ELEMENTI MODULARI DI STAFFAGGIO** Material: Acciaio da bonifica verniciato

**MODULAR CLAMPING TOOLS** Material: Hardened painted steel

**KIT STAFFAGGI DA 58 PEZZI - CLAMPING KIT / 58 PIECES**

Con appoggi dentati e staffe dentate - With step bloks &amp; stepped strap clamping









Ciascun kit include tutti i più importanti elementi di staffaggio per serrare una varietà di particolari. La tabella sottostante indica il contenuto di ogni tipologia di kit di staffaggi adatta per differenti dimensioni di cave a "T"

Each kit consists of all important clamping elements required to clamp a variety of work pieces. Following table shows the contents of each model of clamping kit suitable for different T-Slot sizes.

**Art. G410**

Il Clamping Kit GERARDI da 58 pezzi è disponibile in una elegante rastrelliera che può essere appesa alle macchine o su una parete o appoggiata ad un banco.

GERARDI Clamping Kit - 58 pieces is available in an attractive powder coated metallic rack which can be hung on machines or a wall or kept on a table.

Descrizione prodotto Product Description	Cod.	G410.581210	G410.581410	G410.581412	G410.581612	G410.581812	G410.581816	G410.582016	G410.582216
	T-SLOT SIZE 12mm	T-SLOT SIZE 14mm	T-SLOT SIZE 14mm	T-SLOT SIZE 16mm	T-SLOT SIZE 18mm	T-SLOT SIZE 18mm	T-SLOT SIZE 20mm	T-SLOT SIZE 22mm	
 Dadi a T T nuts (6 pcs)	TN-12-M10	TN-14-M10	TN-14-M12	TN-16-M12	TN-18-M12	TN-18-M16	TN-20-M16	TN-22-M16	
 Prigionieri Clamping studs (4 pcs)	CS-10-75 CS-10-100 CS-10-125 CS-10-150 CS-10-175 CS-10-200	CS-10-75 CS-10-100 CS-10-125 CS-10-150 CS-10-175 CS-10-200	CS-12-75 CS-12-100 CS-12-125 CS-12-150 CS-12-175 CS-12-200	CS-12-75 CS-12-100 CS-12-125 CS-12-150 CS-12-175 CS-12-200	CS-12-75 CS-12-100 CS-12-125 CS-12-150 CS-12-175 CS-12-200	CS-16-75 CS-16-100 CS-16-125 CS-16-150 CS-16-175 CS-16-200	CS-16-75 CS-16-100 CS-16-125 CS-16-150 CS-16-175 CS-16-200	CS-16-75 CS-16-100 CS-16-125 CS-16-150 CS-16-175 CS-16-200	
 Dadi flangiati Flanged nuts (6 pcs)	FN-10	FN-10	FN-12	FN-12	FN-12	FN-16	FN-16	FN-16	
 Dadi prolungamento Extension nuts (4 pcs)	EN-10	EN-10	EN-12	EN-12	EN-12	EN-16	EN-16	EN-16	
 Staffe dentate Stepped strap clamps (2 pcs)	SSC-10-60 SSC-10-80 SSC-10-120	SSC-10-60 SSC-10-80 SSC-10-120	SSC-12-65 SSC-12-100 SSC-12-125	SSC-12-65 SSC-12-100 SSC-12-125	SSC-12-65 SSC-12-100 SSC-12-125	SSC-16-75 SSC-16-125 SSC-16-160	SSC-16-75 SSC-16-125 SSC-16-160	SSC-16-75 SSC-16-125 SSC-16-160	
 Appoggi dentati Step blocks (4 pcs)	SB-1 SB-2 SB-3	SB-1 SB-2 SB-3	SB-1 SB-2 SB-3	SB-1 SB-2 SB-3	SB-1 SB-2 SB-3	SB-1 SB-2 SB-3	SB-1 SB-2 SB-3	SB-1 SB-2 SB-3	
N° totale pezzi Total n. of pieces	58 pieces	58 pieces	58 pieces	58 pieces	58 pieces	58 pieces	58 pieces	58 pieces	
Peso lordo totale Total gross weight	9 kg	9 kg	13 kg	13 kg	13 kg	18 kg	18,5 kg	19 kg	

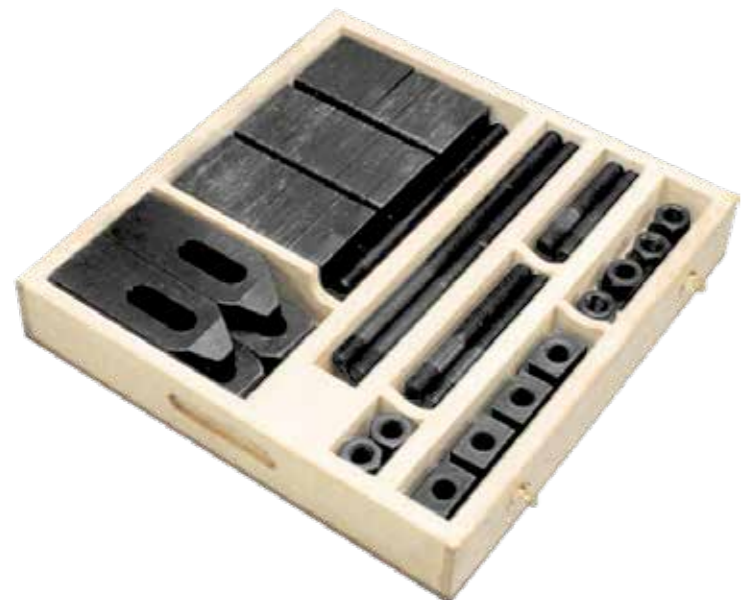
! Si eseguono su richiesta misure non a catalogo / Other sizes can be supplied on request



**ELEMENTI MODULARI DI STAFFAGGIO** Materiale: Acciaio da bonifica verniciato  
**MODULAR CLAMPING TOOLS** Material: Hardened painted steel

**KIT STAFFAGGI DA 34 PEZZI - CLAMPING KIT / 34 PIECES**

Con piastre di appoggio regolabili e piastre dentate - With adjustable support plates & strap clamps



Il Clamping Kit GERARDI da 34 pezzi è un clamping kit economico alloggiato in una elegante scatola di legno.

GERARDI Clamping Kit - 34 pieces is an economical clamping kit housed in an elegant wooden box.

**Art.G411**

La tabella sottostante indica il contenuto di ogni tipologia di kit di staffaggi adatta per different dimensioni di cave a "T"

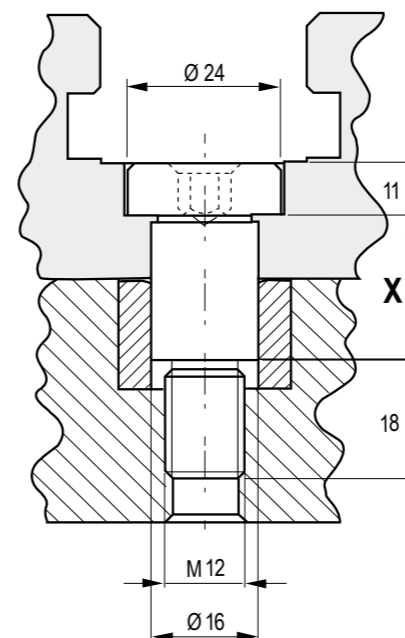
Following table shows the contents of each model of clamping kit suitable for different T-Slot sizes.

Descrizione Contenuto Contents Description	Cod.	G411.341412	G411.341612	G411.341812
		T-SLOT SIZE 14mm	T-SLOT SIZE 16mm	T-SLOT SIZE 18mm
Dadi a T / T nuts (4 pcs)		TN14-M12	TN16-M12	TN18-M12
Prigionieri / Clamping studs (4 pcs)		CS-12-75 CS-12-100 CS-12-150 CS-12-200	CS-12-75 CS-12-100 CS-12-150 CS-12-200	CS-12-75 CS-12-100 CS-12-150 CS-16-200
Dadi flangiati / Flanged nuts (2 pcs)		FN-12	FN-12	FN-12
Dadi prolungamento / Extension nuts (2 pcs)		EN-12	EN-12	EN-12
Staffe dentate / Stepped strap clamps (2 pcs)		SSC-12-100 SSC-12-125	SSC-12-100 SSC-12-125	SSC-12-100 SSC-12-125
Piastre di appoggio regolabili / Adjustable support plates (2 pcs)		ASP-250 ASP-2100	ASP-250 ASP-2100	ASP-250 ASP-2100
N° totale pezzi / Total n. of pieces		<b>34 pieces</b>	<b>34 pieces</b>	<b>34 pieces</b>
Peso lordo totale / Total gross weight		-	-	-

**ELEMENTI MODULARI DI STAFFAGGIO** Materiale: Acciaio da bonifica verniciato  
**MODULAR CLAMPING TOOLS** Material: Hardened painted steel

**VITI CALIBRATE - CALIBRATED SCREWS**

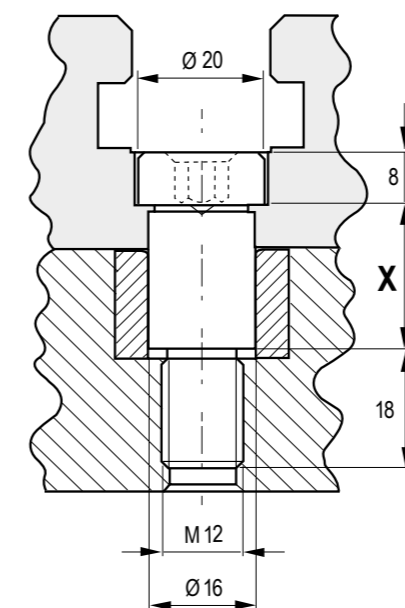
Dimensioni mm / Dimensions mm	X = mm	gr	Cod.
<b>Art.83</b> Vite calibrata a colletto / Shoulder calibrated screw	30	60	8.83.16300
	35	70	8.83.16350
	40	80	8.83.16400
	45	90	8.83.16450
	50	90	8.83.16500
	55	100	8.83.16550
	60	100	8.83.16600
	65	110	8.83.16650
	70	120	8.83.16700
	75	130	8.83.16750
	80	140	8.83.16800
	85	150	8.83.16850
	90	160	8.83.16900
	95	170	8.83.16950
	100	180	8.83.16100



**Art.83B**

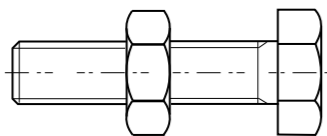
Vite calibrata a colletto / Shoulder calibrated screw

20	50	8.83.B1620
25	50	8.83.B1625
30	60	8.83.B1630
35	60	8.83.B1635
40	70	8.83.B1640
45	80	8.83.B1645
50	90	8.83.B1650
55	90	8.83.B1655
60	100	8.83.B1660
65	110	8.83.B1665
70	120	8.83.B1670
75	130	8.83.B1675
80	140	8.83.B1680
85	150	8.83.B1685
90	160	8.83.B1690
95	170	8.83.B1695
100	180	8.83.B1610

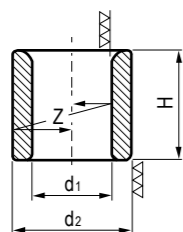


## BULLONERIA VARIA BUSHINGS AND BOLTS

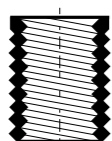
Dimensioni mm / Dimensions mm	Peso gr Weight	Cod.
<b>Art.83C</b> Vite riscontro Bolt travel limit		
M10 x 50		8.83C.413010
M10 x 60		8.83C.413020
M12 x 50		8.83C.513010
M12 x 60		8.83C.513020



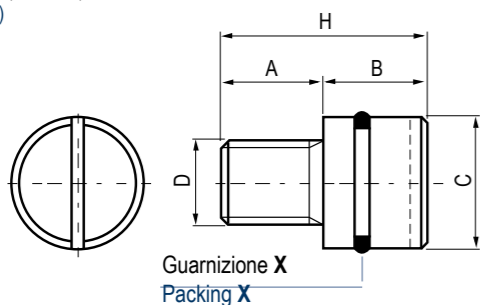
Dimensioni mm / Dimensions mm	d2	H	Z	Cod.
<b>Art.83D</b> Bussole di centraggio in acciaio speciale cementato HRc60. DIN 179C - 12 / 16 / 20 mm Centering bushing are in special alloy steel case hardened and heat treated hardness HRc60. DIN 179C - 12 / 16 / 20 mm				
12F7	18n6	12	0,01	8.83.D0000/12
16F7	26n6	16	0,01	8.83.D0000/16
20F7	30n6	20	0,01	8.83.D0000/20



Dimensioni mm / Dimensions mm	Cod.
<b>Art.83E</b> Filetti riportati in acciaio INOX M10 / M12 / M16 M10 / M12 / M16 stainless steel helicoil	
	8.83.E0000/10
	8.83.E0000/12
	8.83.E0000/16

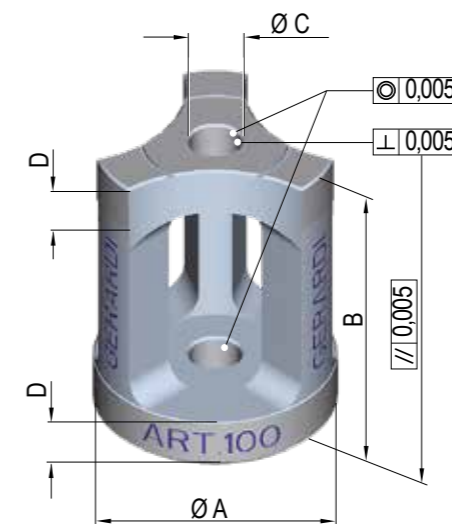


Dimensioni mm / Dimensions mm	B	C	D	H	X	Cod.
<b>Art.84</b> Tappi di chiusura (Alluminio) Plug (Aluminium)						
	10	11	12	M10	21	OR.108 8.84.403010
	15	16	16	M12	31	OR.3043 8.84.503010
	15	19	20	M16	34	OR.119 8.84.603010



## PORTAPEZZI MODULARI - STAFFE INTELLIGENTI MODULAR PIECE-HOLDERS - INTELLIGENT CLAMPS

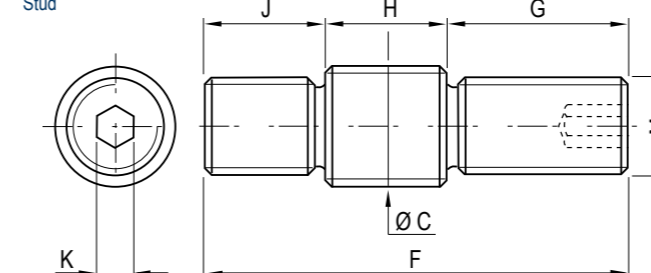
Dimensioni mm / Dimensions mm	A	B	C	D	Cod.
<b>Art.100</b> Staffe intelligenti Intelligent clamp					
	80	100	16	16	8.10.08010
	100	100	20	20	8.10.01010
	100	120	20	20	8.10.01012



Dolci o temprate  
Soft or hardened

A richiesta anche speciali / On request taylor made

PRIGIONIERO - STUD	E	F	G	H	J	K	M	Cod.
<b>Art.101</b> Dadi e rondelle inclusi Including washer and nuts								
Prigioniero Stud	16	80	30	30	20	6	16	8.10.12080
	20	100	35	40	25	6	20	8.10.12410
	20	120	40	50	30	6	24	8.10.13012



A richiesta anche speciali / On request taylor made

Art. 376 in dotazione / Standard equipment

1- Un primo lato del particolare da lavorare deve prima essere finito e predisposto per adattarsi alle staffe G.i. Normalmente si devono realizzare fori di precisione con filetto finale che servono per il posizionamento e l'ancoraggio superiore delle staffe G.i.

1- The first face of the work piece must be finished to fit the new G.i. clamps. This means to make precision holes with a bottom thread which is used to fix the upper part of the G.i. clamps.

2- Ancoraggio inferiore delle staffe G.i. sulla Vostra tavola a reticolo, oppure tramite una piastra a reticolo di interfacciamento se la Vostra tavola non può adattarsi alle staffe G.i.

2- Fix the lower part of the G.i. clamps to the modular grid table or to another modular grid plate for interfacing with the normal table.



# FASI DI LAVORAZIONI CON LE STAFFE INTELLIGENTI Gi

## WORK CYCLE OPERATIONS WITH INTELLIGENT CLAMPS Gi



1

Lavorazione della prima faccia del pezzo grezzo e realizzazione delle sedi dei prigionieri con interassi simili al vostro piano a reticolo

First face of the rough workpiece must be finished including precision holes with bottom thread with same pitch of your grid plate for placing stud



2

Inserire i prigionieri nella faccia del pezzo lavorato

Place the studs in the finished face

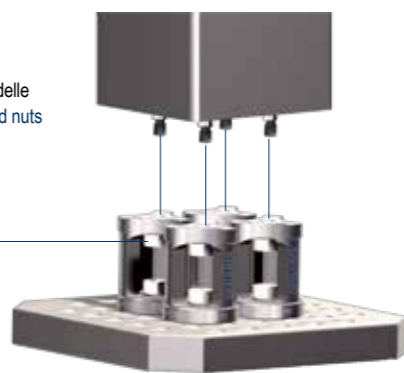


3

Fissare le staffe G.i. sul piano a reticolo per mezzo dei prigionieri

Fix the G.i. clamps on the grid plate through the studs

Dadi e rondelle  
Washer and nuts



4

Sollevare il pezzo con inseriti i prigionieri e fissarlo sulle staffe G.i. tramite i dadi

Lift the workpiece with the studs in position and fixed to the G.i. clamps through the nuts



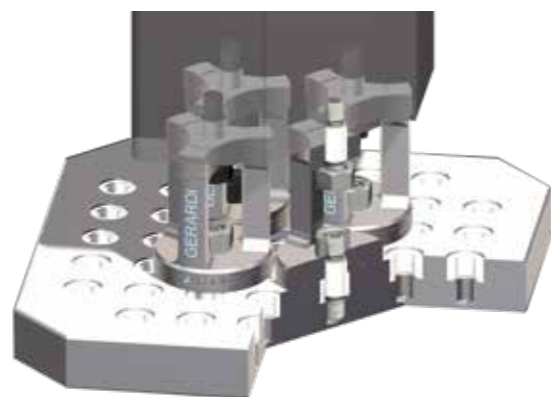
5

Ora il pezzo è fissato e posizionato

Now the workpiece is fixed and positioned

- Minimo ingombro e peso praticamente nullo ! Sistema semplificato al massimo !
- 5 lati liberi da lavorare senza alcun ingombro - Il percorso dell'utensile è libero e senza alcun intoppo
- Precisione di posizionamento facile e sicuro senza alcuna possibilità di spostamento in qualsiasi condizione di lavoro. Ripetibilità entro 0,02mm
- Semplicità, notevole risparmio di tempo e rapidità di staffaggio e posizionamento contemporanei
- Ammortamento praticamente immediato per i costi delle nuove staffe intelligenti G.i.
- Utilizzabili subito su qualsiasi Vs. tavola a reticolo oppure usando piastre di interfacciamento a reticolo se la Vs. tavola a cave non può adattarsi alle staffe G.i.
- Innalzamento automatico del Vs. pallet per centri di lavoro orizzontali che normalmente necessitano di una sovratavola per sfruttare a pieno la corsa verticale del mandrino
- Disponibili sia dolci che temprate

- A simple system - Light weight - Minimum overall dimensions
- 5 free faces of the work piece can be machined without interference and the cutting tool can travel freely
- Easy, safe rigid and very accurate workpiece holding repeatability within 0,02mm.
- High time saving with simultaneous and simple workpiece positioning and clamping
- Cost quickly recoverd in time saving
- Readily useable on grid tables or plates or using extra interface plates to the machine table
- Raises the work piece without the need for an extra over table. Thus allowing full utilization of the machine spindle vertical travel
- G.i. clamps available soft or hardened



# Your updates start now!



Scansiona il QR code ed iscriviti alla nostra newsletter per restare sempre aggiornato!

Scan the QR code and subscribe to our newsletter and stay updated!



La selezione delle attrezzature più particolari realizzate dal nostro ufficio tecnico raccolta e spedita con una serie di newsletter periodiche.

A selection of the best fixtures designed by our technical department and shown on a proper newsletter series titled "Fixture of the Week"



Scopri l'offerta speciale Gerardi rinnovata ogni 6 mesi e contenente molteplici promozioni su una selezione di nostri prodotti.

Find out the Gerardi Special Offers and the many great new products with an unbeatable price / quality ratio!



Una presentazione delle novità tecniche più recenti realizzate da Gerardi e moltissimi contenuti all'interno da scoprire.

An introduction to the latest technical developments of our technical department with many contents to discover



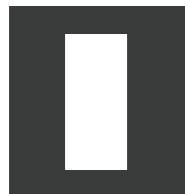
Aggiorniamo spesso i nostri principali cataloghi e listini Workholding & Tooling, iscriviti per restare sempre informato!

We constantly update our main Workholding and Tooling catalogues and price lists, subscribe to be always up-to-date!

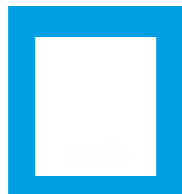


PIÙ SEMPLICE / PIÙ INFO / PIÙ PRODOTTI - EASIER / MORE INFO / MORE PRODUCTS

TROVA IL TUO PRODOTTO IN POCHI CLICK - FIND YOUR PRODUCT IN FEW CLICKS



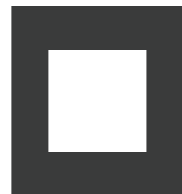
by category



by code



by description



by configurator

**Un nuovo modo facile e veloce per ordinare la tua attrezzatura Gerardi**

Il nuovo Gerardi estore offre la possibilità di visualizzare e ordinare qualsiasi articolo Gerardi appartenente alle categorie Workholding o Tooling presente sui nostri listini in modo semplice, veloce e completo. Da ora puoi ordinare la morsa, la testa angolare o il motorizzato che ti interessa direttamente on-line dal nostro estore senza costi aggiuntivi.

**A new quick and easy way to order your equipment branded Gerardi.**

The new Gerardi estore offers the ability to view and order any item available on our Workholding and Tooling catalogues with the easiest, fastest and comprehensive way. You can now order the vise, angle head or driven tool of your interest directly online from our store without any additional cost.



IMMERGITI A 360° NEL MONDO GERARDI - 360° EXPERIENCE IN THE GERARDI WORLD



virtual reality



many contents



24h accessible

**Visita il nostro showroom in qualunque momento!**

Immergiti completamente nel mondo Gerardi e scopri tutti i prodotti Workholding e Tooling presenti nel nostro showroom attraverso il nuovo tour virtuale 360°. Visualizza i molteplici contenuti multimediali e resta sempre aggiornato!

**Visit our showroom anytime you want !**

Immerse yourself in the Gerardi world and discover all the Workholding and Tooling products displayed in our showroom through our 360° virtual tour. Find out all the multimedia contents and stay up to date!



WINDOWS / IOS



ANDROID / IPHONE



WINDOWS / IOS



ANDROID / IPHONE



